

Cantilever lift DH-LMQ.10

500 - 1000 Kg



DHOLLANDIA





Installation on van chassis.



Installation on truck chassis.



Installation on trailer chassis.

Light-weight 4-cylinder frame without cross beam

The DH-LMQ.10 is equipped with premounted mounting plates at a fixed centre distance. This strong 4-cylinder construction without cross tube allows to **save weight**, and to leave the **spare wheel in its original position** (in most cases), without compromising on stability. The former model DH-LMQ.07 is now replaced by the DH-LMA.08 with arm widths 846 - 1006 mm.

- + 2 lift and 2 tilt cylinders for maximum platform stability
- + Lift frame without cross tube. Saves weight, and leaves the spare wheel in its original position (in most cases).
- + Wedged platform. Level ride with automatic tilt at ground level. Adjustable platform orientation.
- + Excellent price-quality ratio and total cost of ownership (TCO).
- + Electrical controls without sensitive electronic components in basic configuration
- + Lift frame in hot-dip zinc plated (galvanised) finish, or Protection PLUS finish at customer's choice.





Aluminium platform with profiles oriented in longitudinal direction [type V...], and a cross milled anti-slip protection pattern



Frame composed of 2 separate consoles, without structural cross beam



Control unit integrated in cover of pump unit, with main battery disconnect switch and removable key [OAE030.BT.P]

CHARACTERISTICS

DH-LMQ.10

PLATFORM

- Aluminium platform with profiles oriented in longitudinal direction [type V...], and a cross milled anti-slip protection pattern
- Synthetic rollers for the contact between the platform and the ground

FUNCTIONAL & MECHANICAL CHARACTERISTICS

- Frame composed of 2 separate consoles, without structural cross beam
- Intelligent design offering maximum weight saving
- Conical / wedge platform. Level ride with automatic tilt at ground level
- Platform tilt adjustable at any position from the exterior controls

HYDRAULICAL CHARACTERISTICS

- 2 lift cylinders for maximum platform stability
- 2 tilt cylinders with spring assisted platform opening
- Electrical safety valves on all cylinders
- Manual emergency operation on all electrovalves
- Cylinder piston rods in hard-chromed stainless steel
- Cylinders equipped with rubber gaitors and lubrication
- Pump unit 12V or 24V DC, accessible on 4 sides for easy maintenance

ELECTRICAL CHARACTERISTICS

- Control box with battery disconnect switch, joystick control and change-over switch integrated in the cover of the pump unit [OAE030.BT.P.0]
- Without battery disconnect switch: dual toggle-switch control box supplied loose [OAE048.0]
- Electrical controls without sensitive electronic components in basic configuration
- Safe exterior controls with compulsory 2-hand operation
- Electric motor with thermal cut-out fuse

FITTING

- Premounted mounting plates at a fixed center distance [OAM011]
- Fixed 3-piece bumper bar available as option [OAF100.ST]

FINISH & MAINTENANCE

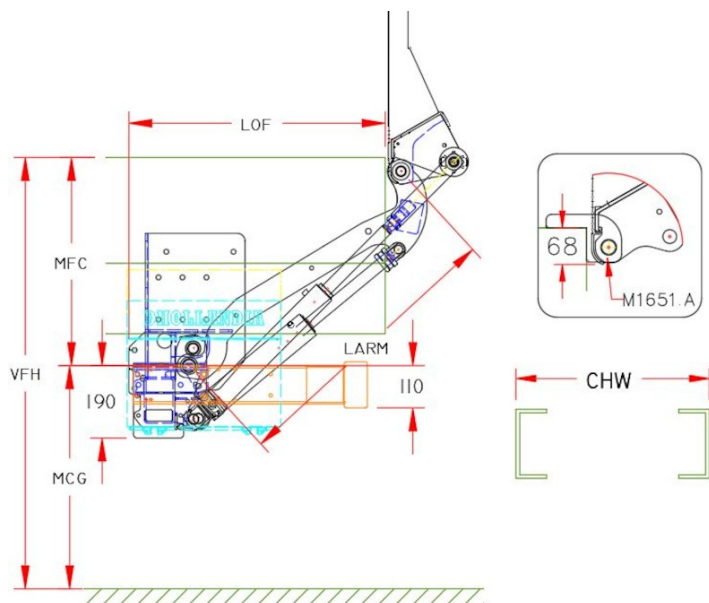
- Low-maintenance bearings in all articulation points, plus grease nipples
- Lift frame in hot-dip zinc plated or "galvanised" finish. Best possible protection against corrosion [OAT104].
- Alu platform or platform sections in natural finish

Disclaimer: data and images of lifts and options are indicative, and may vary in function of the lift execution and vehicle details. Ask confirmation from DHOLLANDIA.



OAP403.1 = horizontally folding platform, full width . Reduces the wind resistance and improves the fuel consumption on open bodies (tray bodies, skeleton bodies etc...).





TECHNICAL CHARACTERISTICS

DH-LMQ.10

Lift frame	Compact lift frame without cross beam
Cylinders	2 lift cylinders + 2 tilt cylinders
Type of ride	Wedged platform. Level ride + automatic tilt at ground level
Platform material	Light weight aluminium
Platform overlap under floor	-68 mm
Standard platform depths	1250 - 1450 - 1600 - 1800 mm max.
Standard platform widths	Variable up to 2550 mm in steps of 5 mm
Lift arm lengths	650 - 750 mm
Lift arm widths	820 mm [chw = 700] - 870 mm [chw = 750] - 975 mm [chw = 860]
Standard control unit	OAE030.BT.P
Standard finish of the lift frame	Protection PLUS [OAT102]

MOUNTING DIMENSIONS

DH-LMQ.10

larm	650	750
vfh max.	1080	1220
mfc max.	530	610
mfc min.	300	300
mfg max.	550	610
lof at mfc max.	540	600
lof at mfc min.	710	820

For higher floor heights, please use the type DH-LM.15





OAE001 - Kit 2-button wander lead + spiral cable



OAE030.BT.P.0 - OAE030.BT in cover of pump unit



OAE041.BP.P.0 - OAE041.BP in cover of pump unit



OAE030.BT.1 - Controls + battery switch + turn switch



OAE041.BP.1 - Arctic controls + E2012 + push button



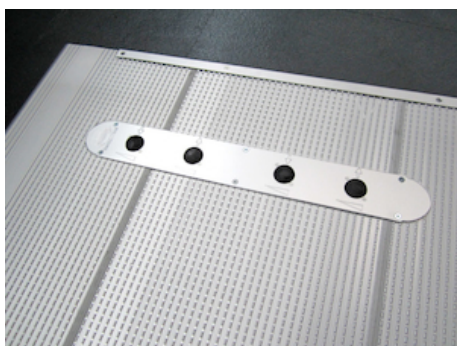
OAE031.Z.0 - Control box 3+1 buttons without battery isolator



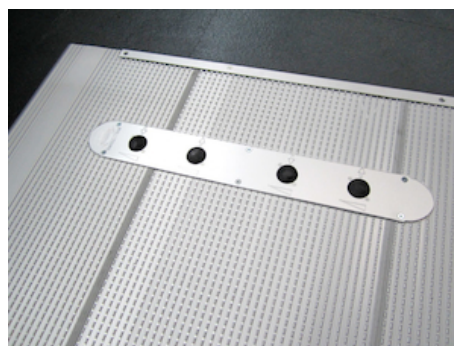
OAM026 - Fitting support control box 3+1 BTN type B



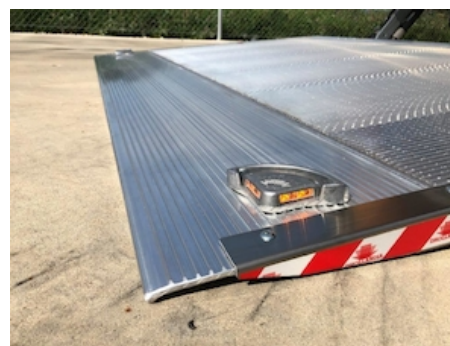
OAE048.0 - Control unit with 2 toggle-switches



OAE060 - 4-button foot controls on the platform



OAE064 - 4-button foot controls + reed sensor

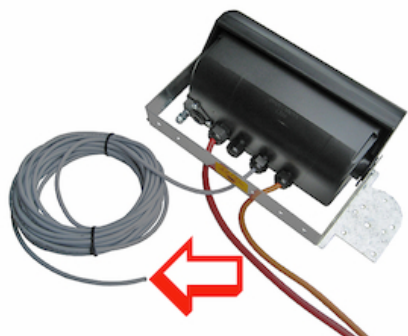


OAE200.B - Flashing platform lights 12/24V + protection



OAE500 - Wire connection ETMA(VEHH)





OAE501.12 - Cable ETMA(VEHH) -12m



OAE502 - Reed sensor on platform



OAE503.1 - Cabin switch (single use)



OAE503.2 - Cabin switch (double use)



OAF001 - Lift arm for trailer coupling LMK



OAF100.ST - Fixed 3-piece bumper STEEL mounted on lift frame



OAF130 - Round rotating bumper bar dia.100



OAM006 - Stop for lift arm against underside of body



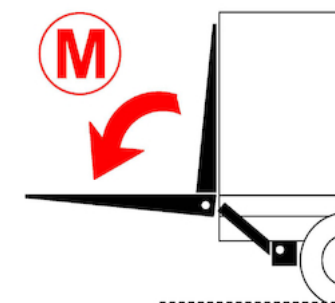
OAM011 - Mounting plate fixed



OAH012.B - 2 mechanical stabilising legs type B



OAH013.40.300 - Hydr.stabilising leg straight 2T 300mm

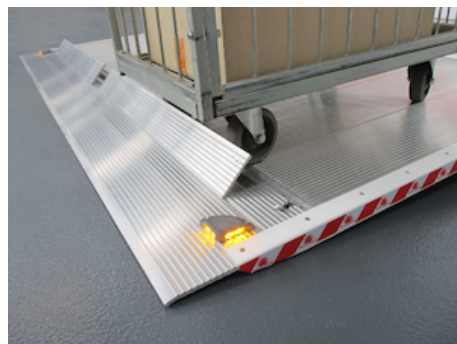


OAH026 - Double acting tilt cylinders





OAP100.M - Manual rollstops in platform point



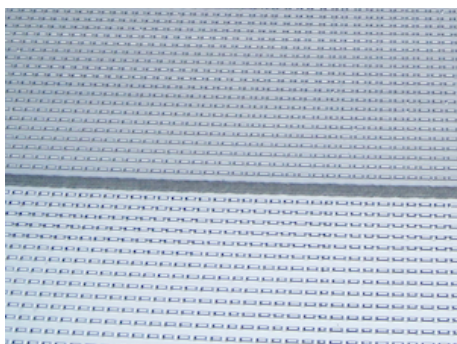
OAP100.A - Automatic rollstops in platform point



OAP301 - Platform alu



OAP302.A - Extension platform ALU / DHESU per 10 cm



OAP353.F - Full anti-slip milling on alu V-platform



OAP403.1 - Foldable point (1x) on DHL*



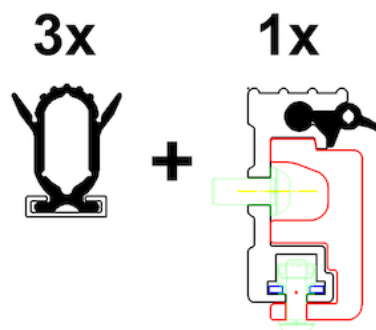
OAP420 - Without platformlock on client request



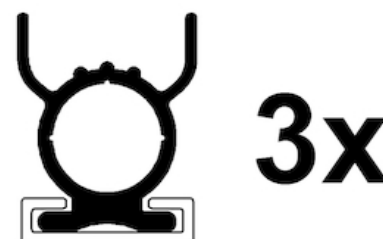
OAP421.L - Standard lock on ALU platform L



OAP421.R - Standard lock on ALU platform R



OAT001 - Rubber platform seals high - 4 sides



OAT003 - Rubber platform seals 25mm - 3 sides



OAT020 - Platform flags TÜV type



OAT023 - Reflecting platform flags export



OAT103.9004 - KTL + powdercoat RAL9004 instead of OAT104 (min.5)



OAT104 - Standard finish GALVANISED for HTL frame



OAT135.2000 - Anodisation alu platform < 2001 mm



OAT135.2800 - Anodisation alu platform > 2000 mm



OAU100 - Control box left (right steer wheel UK)