

## Cantilever lift DH-LV.40



**DHOLLANDIA**



## For truck-trailer combinations with draw bar

The DH-LV.40 is designed for **trucks with a central-axle draw bar trailer**, whereby the draw bar coupling is mounted deep under the truck chassis.

It is equipped with an **articulated bumper bar**, that can be lowered to legal bumper height when the truck drives solo, and can be lifted out of the way when the trailer is attached. The DH-LV allows the operator to load and unload the truck without uncoupling the trailer. In standard configuration, the bumper bar is lifted and lowered manually, but hydraulic operation is available as an option [OAH041].

+ Ideal tail lift for trucks with a trailer coupling: the bumper bar can be adapted without effort from a "solo" to a "combi" position (and vice versa)

+ Loading and unloading of the truck possible without uncoupling the trailer

+ Various solutions in function of the coupling position below the chassis

+ Wedged platform. Level ride with automatic tilt at ground level. Adjustable platform orientation.

+ Lift frame in hot-dip zinc plated or "galvanised" finish. Best possible protection against corrosion [OAT104].



Tail lift used for regular distribution transport (e.g. supermarkets, drinks distribution)



Tail lift used for military or civil off-road applications





Bumper bar in elevated position for combi-ride with trailer



Bumper bar lowered to legal bumper height for a solo-drive without trailer

## CHARACTERISTICS

DH-LV.40

### PLATFORM

- Robust heavy-duty steel platform, or weight-saving aluminium platform
- Synthetic rollers for the contact between the platform and the ground

### FUNCTIONAL & MECHANICAL CHARACTERISTICS

- Lift frame adapted for mounting above / behind the trailer coupling on the truck chassis, with a height adjustable bumper bar
- Conical / wedge platform. Level ride with automatic tilt at ground level
- Heavy duty lift frame, suitable for high capacities and long platforms
- Platform tilt adjustable at any position from the exterior controls

### HYDRAULICAL CHARACTERISTICS

- 2 lift cylinders for maximum platform stability
- 2 tilt cylinders with spring assisted platform opening
- Tilt cylinders with bespoke extensions to maximize the height of the rear cross member at extra mounting heights
- Electrical safety valves on all cylinders
- Manual emergency operation on all electrovalves
- Cylinder piston rods in hard-chromed stainless steel
- Cylinders equipped with rubber gaitors and lubrication
- Pump unit 12V or 24V DC, accessible on 5 sides for easy maintenance

### ELECTRICAL CHARACTERISTICS

- Control box with battery disconnect switch, joystick control and change-over switch [OAE030.BT.0]
- Electrical controls without sensitive electronic components in basic configuration
- Safe exterior controls with compulsory 2-hand operation
- Electric motor with thermal cut-out fuse

### FITTING

- Bolt-on mounting plates for quick and easy fitting [OAM010]

### FINISH & MAINTENANCE

- Low-maintenance bearings in all articulation points, plus grease nipples
- Lift frame in hot-dip zinc plated or "galvanised" finish. Best possible protection against corrosion [OAT104].
- Alu platform or platform sections in natural finish
- Steel platforms to 2000 mm shotblasted and KTL epoxy primed, or in zinc primer at the discretion of DHOLLANDIA. Steel platforms > 2000 mm in zinc primer.

Disclaimer: data and images of lifts and options are indicative, and may vary in function of the lift execution and vehicle details. Ask confirmation from DHOLLANDIA.



**DHOLLANDIA**

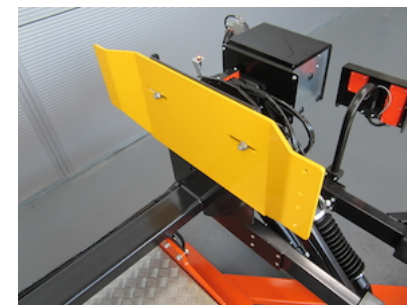
[www.dhollandia.com](http://www.dhollandia.com)



**OAU001 = DH-LM.30 "Swedish style"** = special execution with a 3-piece bumper bar adjustable in height and in depth. Specially designed for trailer couplings mounted completely at the rear, below the chassis beams. OAE001 cantilever lifts are equipped with double-acting tilt cylinders.



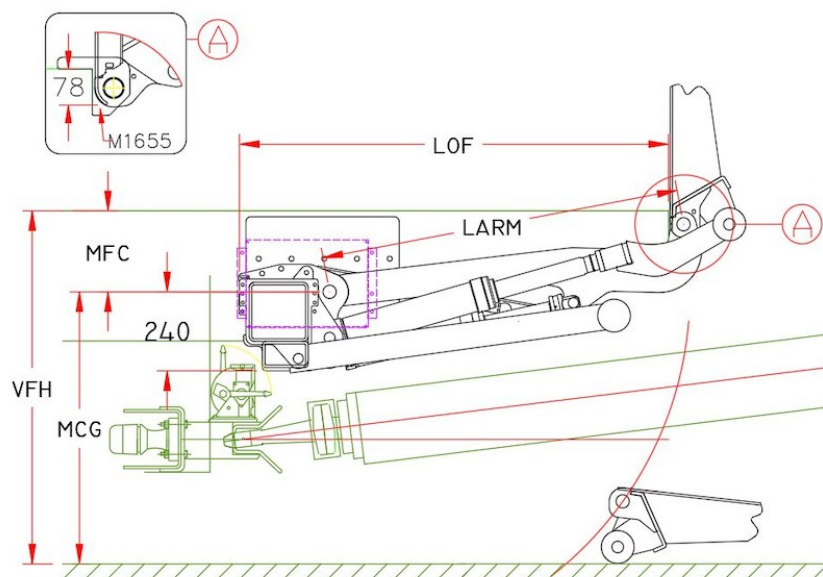
**OAU002 = DH-LV "Finnish style"** = special execution with mounting of the lift frame at the same position as the mounting plates of the trailer coupling under the chassis (coupling at approx. 1000 mm from the rear of the vehicle floor)



# TECHNICAL CHARACTERISTICS

DH-LV.40

|  |  |
|--|--|
| <b>Lift frame</b>                        | Custom made frame mounted between chassis & coupling                                       |
| <b>Cylinders</b>                         | 2 lift cylinders + 2 tilt cylinders + 1 memory cylinder                                    |
| <b>Type of ride</b>                      | Wedged platform. Level ride + automatic tilt at ground level                               |
| <b>Material</b>                          | Aluminium or steel (alu = max. 3000 kg)  |
| <b>Platform overlap under floor</b>      | -78 mm   |
| <b>Standard platform depths</b>          | - Steel: 1750 - 2000 mm (max. 4500 mm)<br>- Alu: 1800 - 2000 mm (max. 4500 mm)             |
| <b>Standard platform widths</b>          | - Steel: 2350 - 2480 - 2500 - 2520 - 2550 mm<br>- Alu: free up to 2550 mm in steps of 5 mm |
| <b>Lift arm lengths</b>                  | 1100 mm  |
| <b>Lift arm widths</b>                   | 1300 mm (other on request)   |
| <b>Standard control unit</b>             | OAE030.BT  |
| <b>Standard finish of the lift frame</b> | Hot-dip zinc plated finish [OAT104]  |



# MOUNTING DIMENSIONS

DH-LV.40

|                        |             |
|------------------------|-------------|
| <b>larm</b>            | <b>1100</b> |
| <b>vfh max.</b>        | 1660        |
| <b>mfc max.</b>        | 730         |
| <b>mfc min.</b>        | 200         |
| <b>mfc max.</b>        | 930         |
| <b>lof</b> at mfc max. | 1090        |
| <b>lof</b> at mfc min. | 1330        |





OAE001 - Kit 2-button wander lead + spiral cable



OAE030.BT.0 - Controls + battery switch + turn switch



OAE041.BP.0 - Arctic control box + E2012 + push button



OAM025 - Adjust. support for control behind power pack



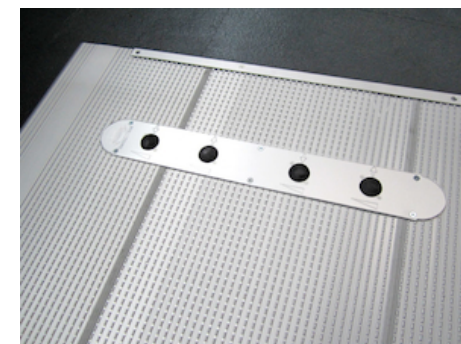
OAE031.Z.0 - Control box 3+1 buttons without battery isolator



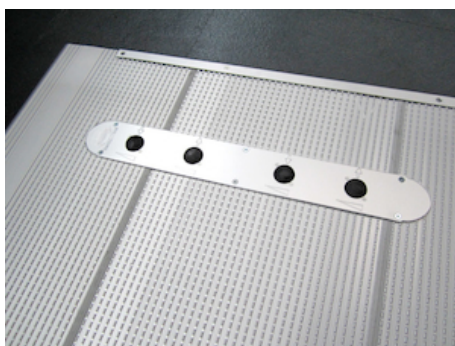
OAM026 - Fitting support control box 3+1 BTN type B



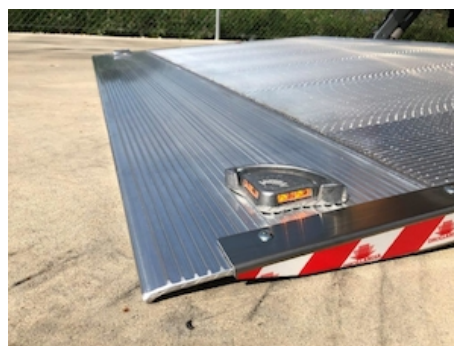
OAE048.0 - Control unit with 2 toggle-switches



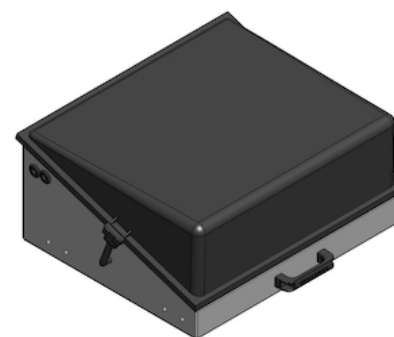
OAE060 - 4-button foot controls on the platform



OAE064 - 4-button foot controls + reed sensor



OAE200.B - Flashing platform lights 12/24V + protection

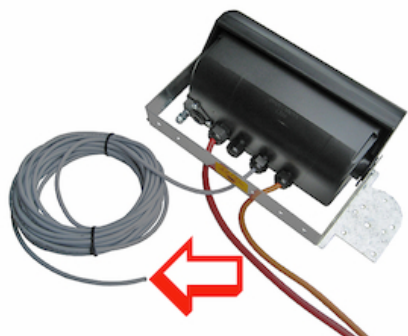


OAE400.24 - Battery box 24V empty + cover



OAE500 - Wire connection ETMA(VEHH)





OAE501.12 - Cable ETMA(VEHH) -12m



OAE502 - Reed sensor on platform



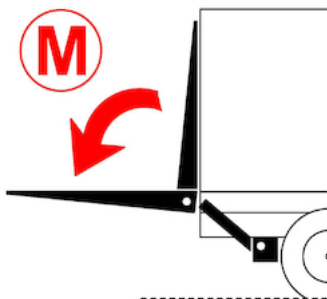
OAE503.2 - Cabin switch (double use)



OAH010.LE - Hydraulic stabilising leg 10T



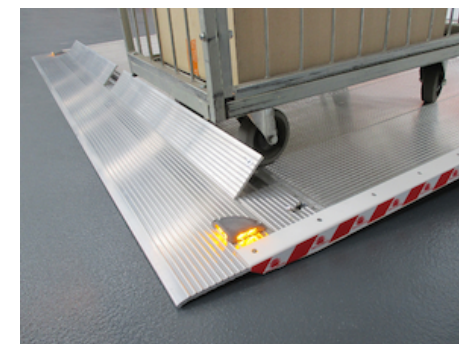
OAH013.60.LE - Hydr.stabilising leg straight 4T LE...mm



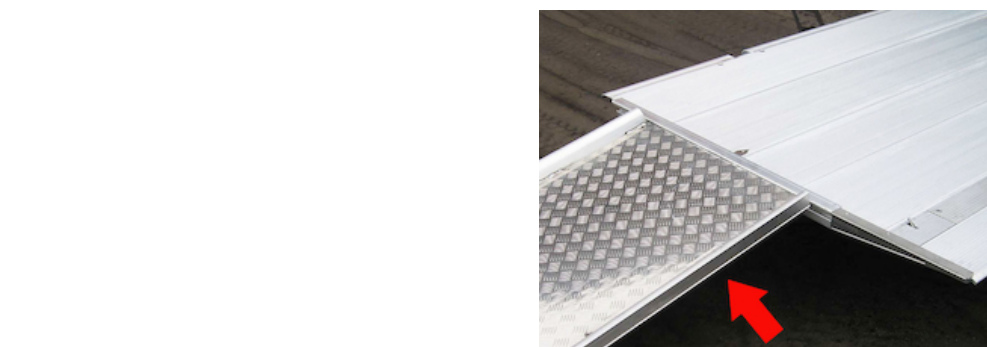
OAH026 - Double acting tilt cylinders



OAP100.M - Manual rollstops in platform point



OAP100.A - Automatic rollstops in platform point



OAP120.ST - Supplement roll stops in steel platform



OAP021 - 1 STD. side ramp (type A) for OAP020



OAP202.LR - 2 hinged side safety rails L+R - STD



OAP302.A - Extension platform ALU / DHESU per 10 cm





OAP302.S - Extension STEEL platform per 10 cm

OAP302.D - Platform depth out of standard (1-4 pcs)



T= non-standard



T= non-standard

OAP303 - Platform width out of standard

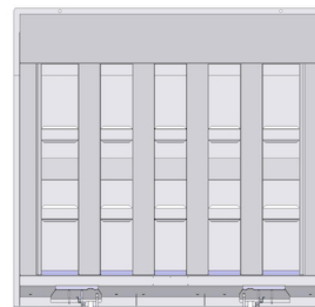
OAP303.B - Platform width DHL\* 2551-2590 mm



OAP304 - Steel platform flat between the main beams



OAP305 - Steel platform with fully flat exterior side



OAP323 - Steel platform with vertical beam structure



OAP350.H03 - Flat alu platform with ALU support beams >1500kg



OAP420 - Without platformlock on client request



OAP421.L - Standard lock on ALU platform L



OAP421.R - Standard lock on ALU platform R

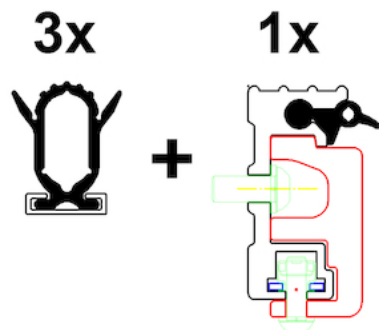


OAP422.L - Standard lock on STEEL platform L

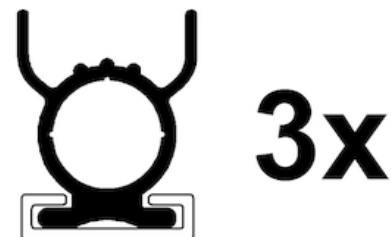




OAP422.R - Standard lock on STEEL platform R



OAT001 - Rubber platform seals high - 4 sides



OAT003 - Rubber platform seals 25mm - 3 sides



OAT020 - Platform flags TÜV type



OAT023 - Reflecting platform flags export



OAT124 - GALVA finish for steel DHL\* platform



OAT131 - Publicity plate for platform, supplied loose



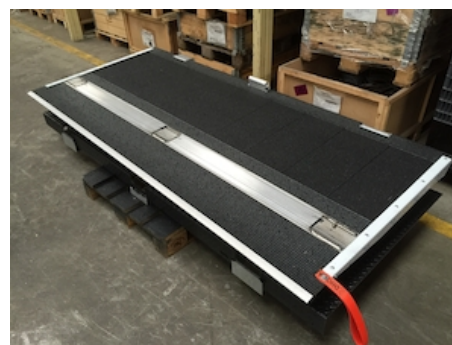
OAT131.PM - Glued publicity plate on platform



OAT135.2000 - Anodisation alu platform < 2001 mm



OAT135.2800 - Anodisation alu platform > 2000 mm

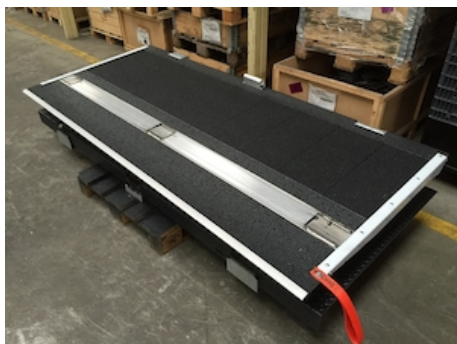


OAT304.1600 - Noise-dampening coating up to 1600 mm

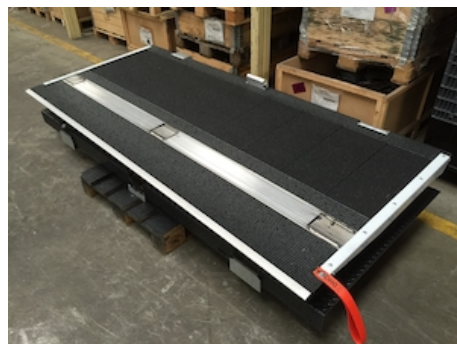


OAT304.2000 - Noise dampening coating 1601-2000 mm





OAT304.2500 - Noise dampening coating 2001-2500 mm



OAT304.3000 - Noise dampening coating 2501-3000 mm

OAT304.G - Price suppl. for coating on OAT124 galva platform



OAU004 - DH-LV for draw-bar coupling + fold-away bumper



OAU100 - Control box left (right steer wheel UK)