

## Cantilever lift DH-LM.30

2000 - 3000 Kg





Weight-saving aluminium platform with anti-slip surface



Robust, reinforced steel platform for use in hostile-environment conditions



Long platforms available, forming the rear closure of the body aperture

## APPLICATION

DH-LM.30

### Powerful, robust lift for the intensive distribution

The cantilever lift DH-LM.30 is a **powerful lift** for intensive, heavy duty tasks and “hostile environment” circumstances. It is ideal for the most demanding applications in the regular transport business, such as **supermarket & food distribution**.

The robust frame with reinforced articulation pins and larger cylinders is primarily designed for lift capacities of 2500 to 3000 kg, but is also available as upgraded 1500-2000 kg version.

The DH-LM.30 can be equipped with very long platforms (3000 mm long and even longer foldable platforms). Hence it can easily form the rear closure of the vehicle body. The **DH-LMR** launched in 2014, is a quick-fit system with bolt-on clamps for trailer and semi-trailer chassis.

**+** Robust, powerful lift for heavy-duty applications in "hostile environment" conditions. Ideal for supermarkets, food & drinks distribution.

**+** Reinforced lift mechanism and platform, suitable for lift capacities of 2500-3000 kg. Also available as upgraded 2000 kg execution for platforms longer than 2250 mm.

**+** Platform can form the rear closure of the body aperture (single-piece platforms up to 3000 mm, folding platforms up to 4500 mm).

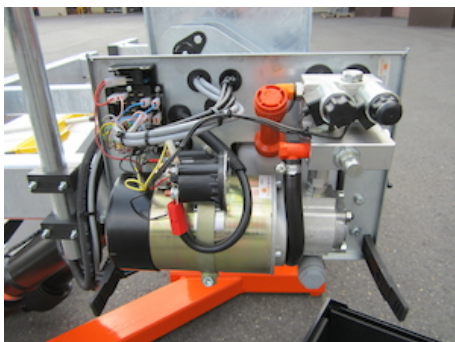
**+** DH-LMR quick-fit execution for trailer and semi-trailer I-beam chassis available as an option [OAU009]

**+** Lift frame in hot-dip zinc plated or "galvanised" finish. Best possible protection against corrosion [OAT104].





Manual emergency operation on all electrovalves



Pump unit 12V or 24V DC, accessible on 5 sides for easy maintenance



Electrical controls without sensitive electronic components in basic configuration

## CHARACTERISTICS

DH-LM.30

### PLATFORM

- Robust heavy-duty steel platform, or weight-saving aluminium platform
- Synthetic rollers for the contact between the platform and the ground

### FUNCTIONAL & MECHANICAL CHARACTERISTICS

- Conical / wedge platform. Level ride with automatic tilt at ground level
- Heavy duty lift frame, suitable for high capacities and long platforms
- Platform tilt adjustable at any position from the exterior controls

### HYDRAULICAL CHARACTERISTICS

- 2 lift cylinders for maximum platform stability
- 2 tilt cylinders with spring assisted platform opening
- Electrical safety valves on all cylinders
- Manual emergency operation on all electrovalves
- Cylinder piston rods in hard-chromed stainless steel
- Cylinders equipped with rubber gaitors and lubrication
- Pump unit 12V or 24V DC, accessible on 5 sides for easy maintenance

### ELECTRICAL CHARACTERISTICS

- Control box with battery disconnect switch, joystick control and change-over switch [OAE030.BT.0]
- Without battery disconnect switch: dual toggle-switch control box supplied loose [OAE048.0]
- Electrical controls without sensitive electronic components in basic configuration
- Safe exterior controls with compulsory 2-hand operation
- Electric motor with thermal cut-out fuse

### FITTING

- Bolt-on mounting plates for quick and easy fitting [OAM010]
- Fixed 3-piece bumper bar available as option [OAF100.ST]
- DH-LMR quick-fit execution for trailer and semi-trailer I-beam chassis available as an option [OAU009]

### FINISH & MAINTENANCE

- Low-maintenance bearings in all articulation points, plus grease nipples
- Lift frame in hot-dip zinc plated or "galvanised" finish. Best possible protection against corrosion [OAT104].
- Alu platform or platform sections in natural finish
- Steel platforms to 2000 mm shotblasted and KTL epoxy primed, or in zinc primer at the discretion of DHOLLANDIA. Steel platforms > 2000 mm in zinc primer.

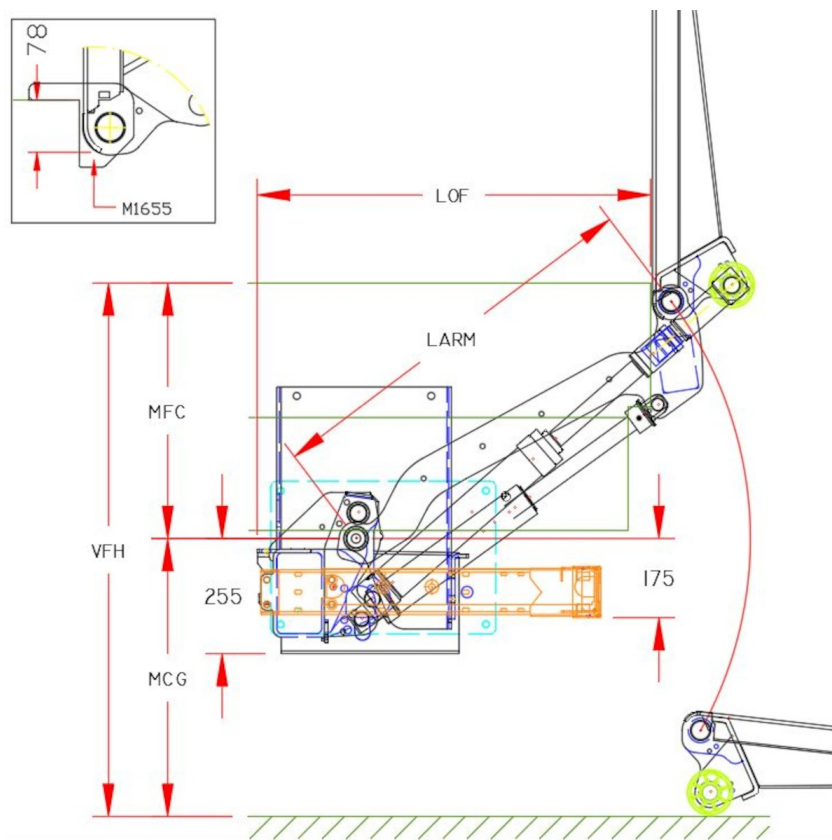
Disclaimer: data and images of lifts and options are indicative, and may vary in function of the lift execution and vehicle details. Ask confirmation from DHOLLANDIA.





**OAU009 = DH-LMR.30** = special execution for quick-fitting on trailer and semitrailer chassis with I-shaped chassis beams





## TECHNICAL CHARACTERISTICS

**DH-LM.30**

<b>Lift frame</b>	100 x 180 mm
<b>Cylinders</b>	2 lift cylinders + 2 tilt cylinders
<b>Type of ride</b>	Wedged platform. Level ride + automatic tilt at ground level
<b>Platform material</b>	Aluminium or steel
<b>Platform overlap under floor</b>	-78 mm
<b>Standard platform depths</b>	- Steel: 1750 - 2000 mm (max. 4500 mm) - OAP302.D for steel with non-standard depth - Alu: 1800 - 2000 mm (max. 4500 mm)
<b>Standard platform widths</b>	- Steel: 2350 - 2480 - 2500 - 2520 - 2550 mm - OAP303 for steel with non-standard width - Alu: free up to 2550 mm in steps of 5 mm
<b>Lift arm lengths</b>	820 - 880 - 940 - 1000 - 1100 - 1200 mm
<b>Lift arm widths</b>	800 - 1200 - 1300 - 1550 mm
<b>Standard control unit</b>	OAE030.BT
<b>Standard finish of the lift frame</b>	Hot-dip zinc plated finish [OAT104]

## MOUNTING DIMENSIONS

**DH-LM.30**

larm	820	880	940	1000	1100	1200
<b>vfh max.</b>	1330	1420	1500	1590	1730	1870
<b>mfc max.</b>	680	730	780	820	900	980
<b>mfc min.</b>	300	300	350	400	450	500
<b>mcg max.</b>	650	690	720	770	830	890
<b>lof</b> at mfc max.	690	725	755	800	860	925
<b>lof</b> at mfc min.	950	1015	1060	1110	1195	1285





OAE001 - Kit 2-button wander lead + spiral cable



OAE030.BT.0 - Controls + battery switch + turn switch



OAE041.BP.0 - Arctic control box + E2012 + push button



OAM025 - Adjust. support for control behind power pack



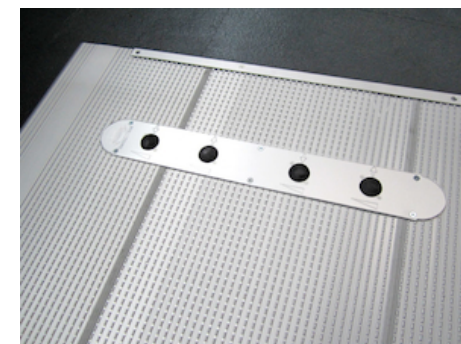
OAE031.Z.0 - Control box 3+1 buttons without battery isolator



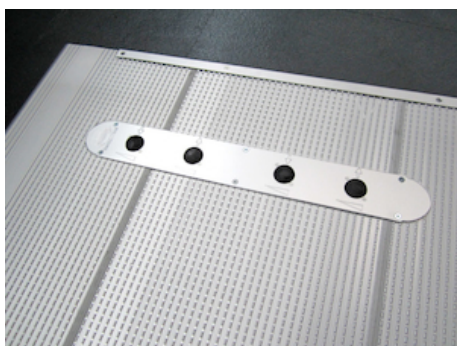
OAM026 - Fitting support control box 3+1 BTN type B



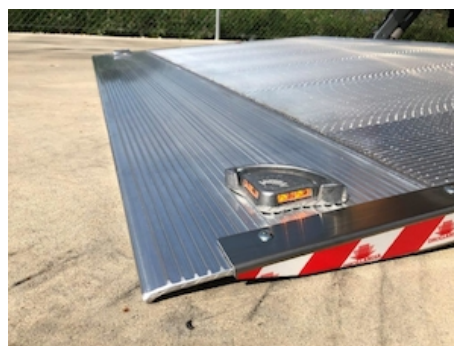
OAE048.0 - Control unit with 2 toggle-switches



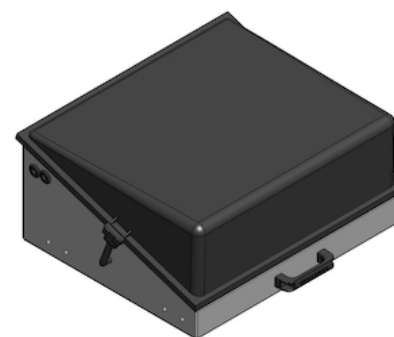
OAE060 - 4-button foot controls on the platform



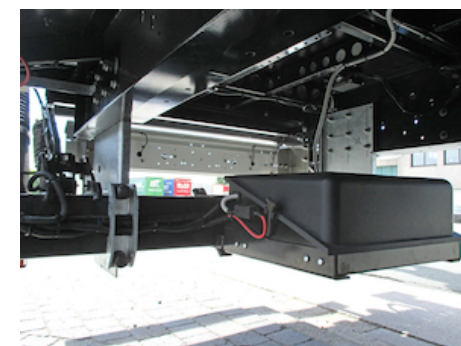
OAE064 - 4-button foot controls + reed sensor



OAE200.B - Flashing platform lights 12/24V + protection



OAE400.24 - Battery box 24V empty + cover



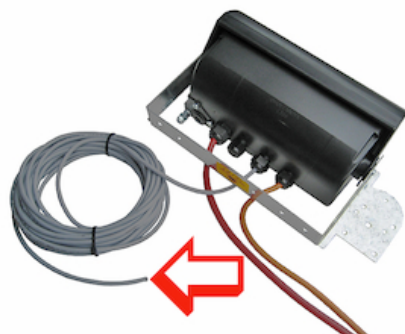
OAE405 - Battery box mounted on lift frame (suppl)







OAE500 - Wire connection ETMA(VEHH)



OAE501.12 - Cable ETMA(VEHH) -12m



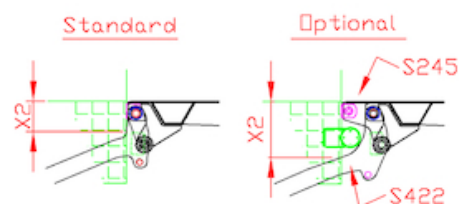
OAE502 - Reed sensor on platform



OAE503.1 - Cabin switch (single use)



OAE503.2 - Cabin switch (double use)



OAF002 - SM/SSU lift arms LMLK for rear trailer buffer

OAF108.M - Pivoting 3-piece bumper bar, manual

OAF108.H - Pivoting 3-piece bumper bar, hydraulic



OAF100.ST - Fixed 3-piece bumper STEEL mounted on lift frame



OAF103 - Preparation LM bumper for ball coupling

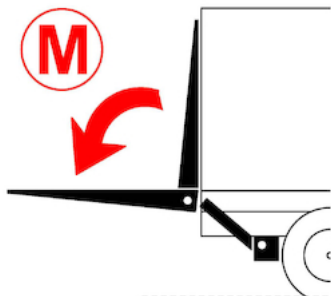


OAH010.LE - Hydraulic stabilising leg 10T

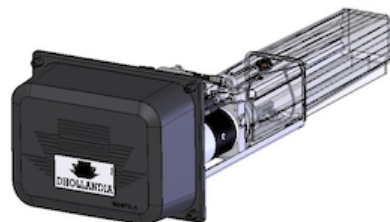


OAH013.60.LE - Hydr.stabilising leg straight 4T LE...mm





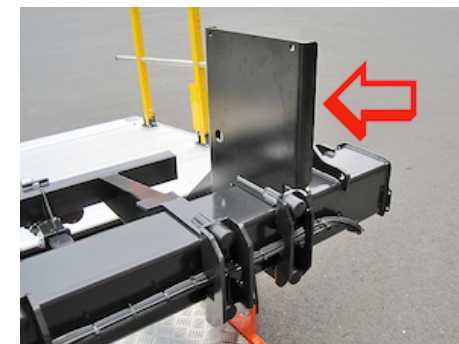
OAH026 - Double acting tilt cylinders



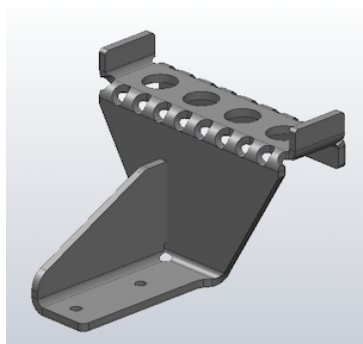
OAH048.0 - Power pack inside main beam of lift frame



OAM010 - Mounting plate bolt-on



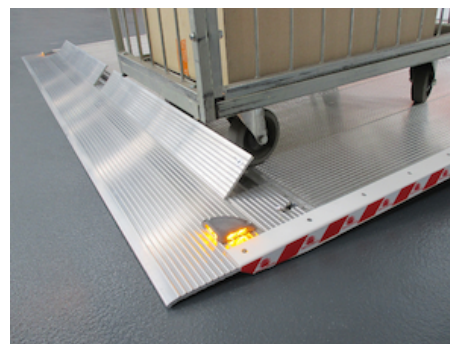
OAM010.B - Higher mounting plates



OAM024 - Access step for mounting on bumper tube



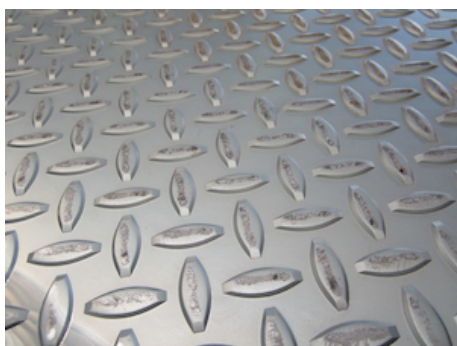
OAP100.M - Manual rollstops in platform point



OAP100.A - Automatic rollstops in platform point



OAP021 - 1 STD. side ramp (type A) for OAP020



OAP300 - Platform steel



OAP120.ST - Supplement roll stops in steel platform



OAP301 - Platform alu



OAP202.LR - 2 hinged side safety rails L+R - STD





OAP302.A - Extension platform ALU / DHEU per 10 cm



OAP302.S - Extension STEEL platform per 10 cm

OAP302.D - Platform depth out of standard (1-4 pcs)



OAP303 - Platform width out of standard



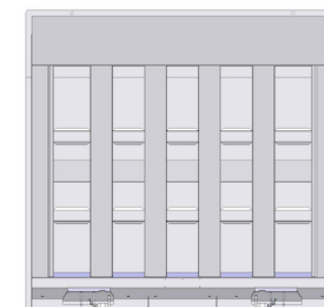
OAP303.B - Platform width DHL\* 2551-2590 mm



OAP304 - Steel platform flat between the main beams



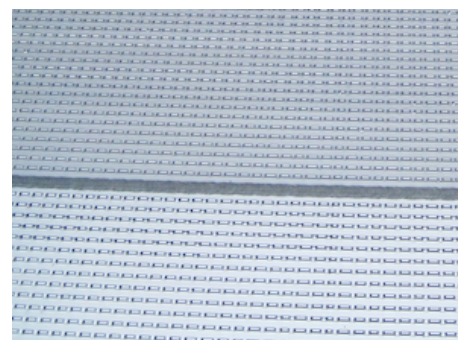
OAP305 - Steel platform with fully flat exterior side



OAP323 - Steel platform with vertical beam structure



OAP350.H03 - Flat alu platform with ALU support beams >1500kg



OAP353.F - Full anti-slip milling on alu V-platform



OAP403.1 - Foldable point (1x) on DHL\*

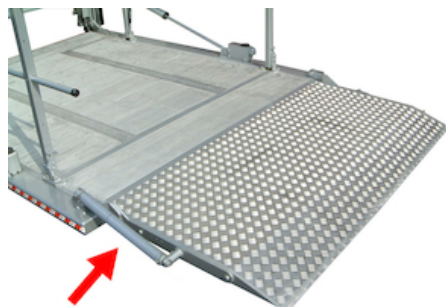


OAP404.1 - Reinforced foldable point (1x) on DHL\*





OAP420 - Without platformlock on client request



OAP405 - Traction spring on foldable point

OAP405.LR - 2 traction springs L+R on foldable point



OAP421.L - Standard lock on ALU platform L



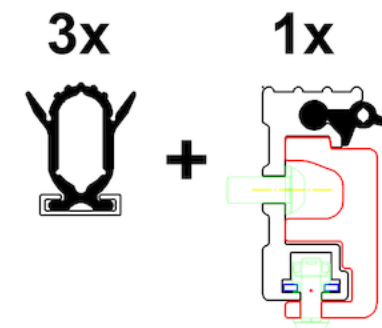
OAP421.R - Standard lock on ALU platform R



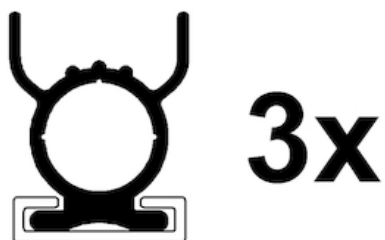
OAP422.L - Standard lock on STEEL platform L



OAP422.R - Standard lock on STEEL platform R



OAT001 - Rubber platform seals high - 4 sides



OAT003 - Rubber platform seals 25mm - 3 sides



OAT020 - Platform flags TÜV type

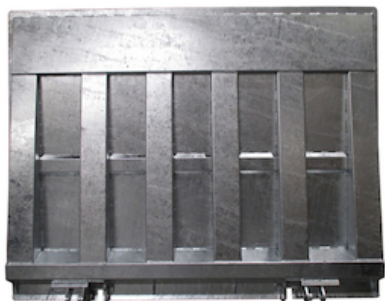


OAT023 - Reflecting platform flags export



OAT104 - Standard finish GALVANISED for HTL frame





OAT124 - GALVA finish for steel DHL\* platform



OAT131 - Publicity plate for platform, supplied loose



OAT131.PM - Glued publicity plate on platform



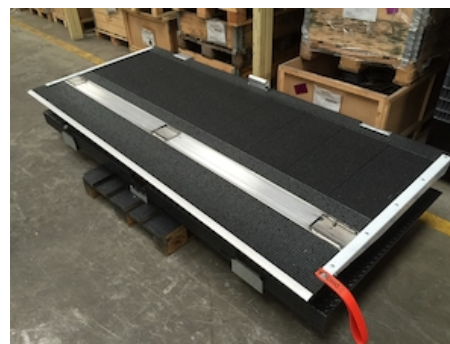
OAT135.2000 - Anodisation alu platform < 2001 mm



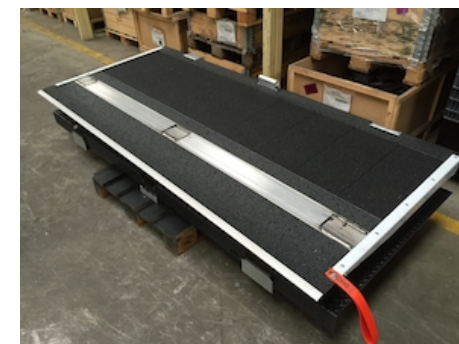
OAT135.2800 - Anodisation alu platform > 2000 mm



OAT304.2000 - Noise dampening coating 1601-2000 mm



OAT304.2500 - Noise dampening coating 2001-2500 mm



OAT304.3000 - Noise dampening coating 2501-3000 mm



OAU001 - Execution LM.30 + adjustable bumper bar



OAU004 - DH-LV for draw-bar coupling + fold-away bumper



OAU005 - Dh-LMP/ESP execution for very short overhang

OAT304.G - Price suppl. for coating on OAT124 galva platform







OAU009 - DH-LMR execution for I-beam chassis



OAU100 - Control box left (right steer wheel UK)

