

Cantilever lift DH-LSU.40

3000 - 4000 Kg



DHOLLANDIA





Reinforced heavy-duty steel platform, adapted to extreme lift capacities



Extended platform with foldable point, for loading & unloading cars, long machines etc...

For car transport and other heavy sizeable loads

The DH-LSU.40 is a powerful lift for **heavy loads positioned at an unfavorable centre of gravity** (further away from the rear end of the vehicle).

It is often used for the **transport of cars**. The option OAU007 includes an overall platform extension to 3000 mm; 2 foldable platform aluminium ramps of 1500 mm and hydraulic stabilising legs.

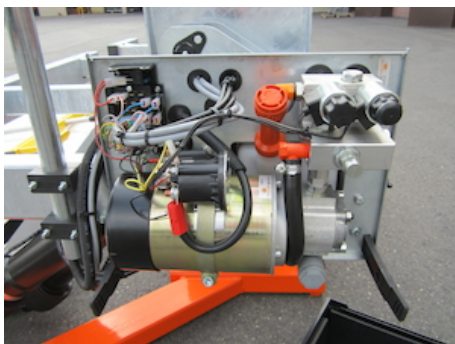
The DH-LSU.40 3000 kg version can be used for cars up to 2000 kg proper weight. For cars between 2000 & 3000 kg, the lift model DH-LSU.60 4000 kg is appropriate.

- + Powerful tail lift for handling cars, ponderous machines and other heavy and sizeable loads
- + Reinforced lift mechanism and platform, suitable for lift capacities of 3000-4000 kg
- + Car transport kit available with extended folding heavy-duty platform and hydraulic stabilising legs [OAU007]
- + Lift frame in Protection PLUS finish (zinc phosphate + KTL epoxy primer + polyester powder top coat)





Manual emergency operation on all electrovalves



Pump unit 12V or 24V DC, accessible on 5 sides for easy maintenance



Electrical controls without sensitive electronic components in basic configuration

CHARACTERISTICS

DH-LSU.40

PLATFORM

- Reinforced heavy-duty steel platform, adapted to extreme lift capacities
- Synthetic rollers for the contact between the platform and the ground

FUNCTIONAL & MECHANICAL CHARACTERISTICS

- Reinforced heavy-duty lift frame, suitable for extreme lift capacities
- Conical / wedge platform. Level ride with automatic tilt at ground level
- Platform tilt adjustable at any position from the exterior controls

HYDRAULICAL CHARACTERISTICS

- 2 lift cylinders for maximum platform stability
- 2 tilt cylinders with spring assisted platform opening
- Electrical safety valves on all cylinders
- Manual emergency operation on all electrovalves
- Cylinder piston rods in hard-chromed stainless steel
- Cylinders equipped with rubber gaitors and lubrication
- Pump unit 12V or 24V DC, accessible on 5 sides for easy maintenance

ELECTRICAL CHARACTERISTICS

- Control box with battery disconnect switch, joystick control and change-over switch [OAE030.BT.0]
- Electrical controls without sensitive electronic components in basic configuration
- Safe exterior controls with compulsory 2-hand operation
- Electric motor with thermal cut-out fuse

FITTING

- Weld-on mounting plates, to be reinforced during installation
- Fixed 3-piece bumper bar available as option [OAF100.ST]
- Chassis work and fitting details to be discussed and coordinated prior to placing order
- Chassis and subframe requirements to be validated with the vehicle manufacturer

FINISH & MAINTENANCE

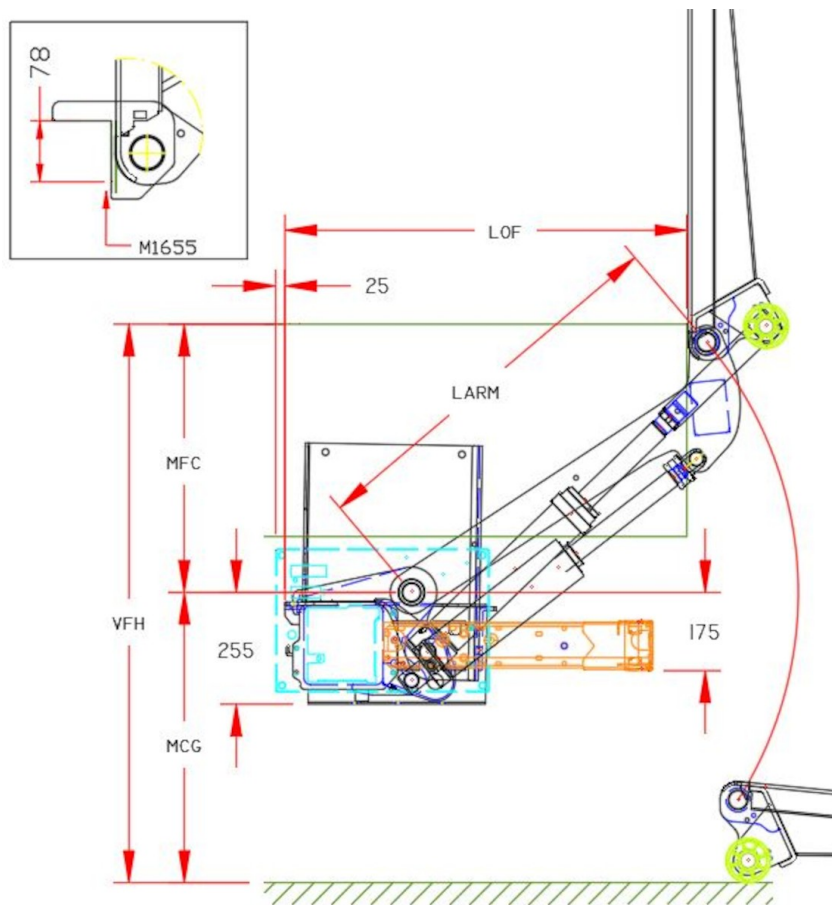
- Low-maintenance bearings in all articulation points, plus grease nipples
- Lift frame in Protection PLUS finish (zinc phosphate + KTL epoxy primer + polyester powder top coat)
- Steel platforms to 2000 mm shotblasted and KTL epoxy primed, or in zinc primer at the discretion of DHOLLANDIA. Steel platforms > 2000 mm in zinc primer.

Disclaimer: data and images of lifts and options are indicative, and may vary in function of the lift execution and vehicle details. Ask confirmation from DHOLLANDIA.



OAU007 for car transport: various types of foldable ramps. In 1 section over the full platform width, or split into 2 sections. With lighter-duty flush hinges or reinforced top-mounted hinges.





TECHNICAL CHARACTERISTICS

DH-LSU.40

Lift frame	180 x 180 mm
Cylinders	2 lift cylinders + 2 tilt cylinders + 1 memory cylinder
Type of ride	Wedged platform. Level ride + automatic tilt at ground level
Material	Steel or aluminium (alu = max. 3000 kg)
Platform overlap under floor	-78 mm
Standard platform depths	2000 mm (max. 4500 mm)
Standard platform widths	- Steel: 2350 - 2480 - 2500 - 2520 - 2550 mm - Alu: free up to 2550 mm in steps of 5 mm
Lift arm lengths	820 - 880 - 940 - 1000 - 1200 mm
Lift arm widths	1200 - 1300 - 1400 - 1550 mm
Standard control unit	OAE030.BT
Standard finish of the lift frame	Protection PLUS [OAT102]

MOUNTING DIMENSIONS

DH-LSU.40

larm	820	880	940	1000	1200
vfh max.	1310	1420	1500	1580	1900
mfc max.	660	720	760	810	910
mfc min.	300	300	350	400	450
mcg max.	650	700	740	770	990
lof at mfc max.	780	805	850	885	1070
lof at mfc min.	1020	1085	1130	1175	1375





OAE001 - Kit 2-button wander lead + spiral cable



OAE030.BT.0 - Controls + battery switch + turn switch



OAE041.BP.0 - Arctic control box + E2012 + push button



OAM025 - Adjust. support for control behind power pack



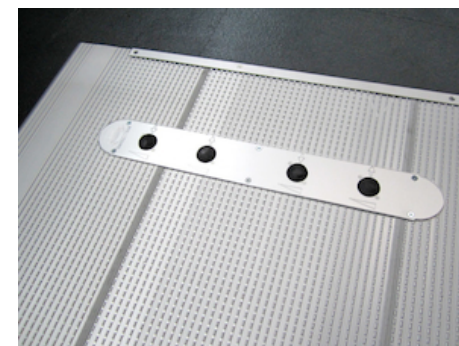
OAE031.Z.0 - Control box 3+1 buttons without battery isolator



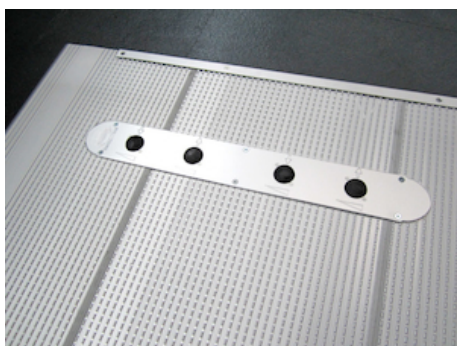
OAM026 - Fitting support control box 3+1 BTN type B



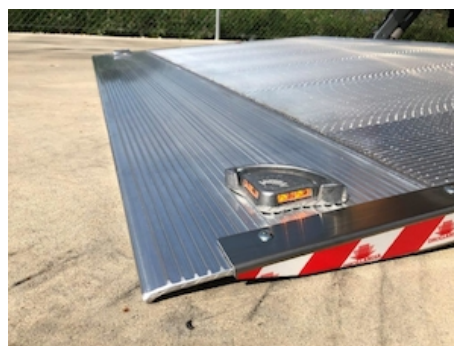
OAE048.0 - Control unit with 2 toggle-switches



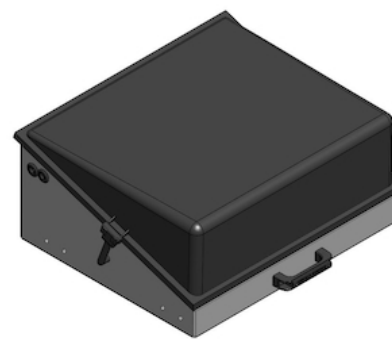
OAE060 - 4-button foot controls on the platform



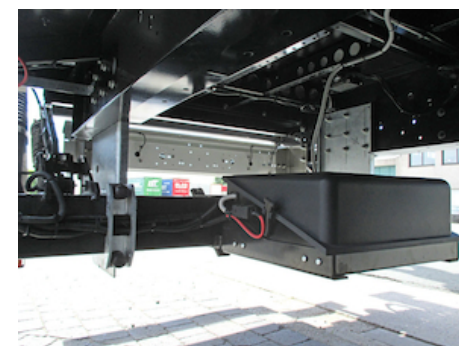
OAE064 - 4-button foot controls + reed sensor



OAE200.B - Flashing platform lights 12/24V + protection



OAE400.24 - Battery box 24V empty + cover

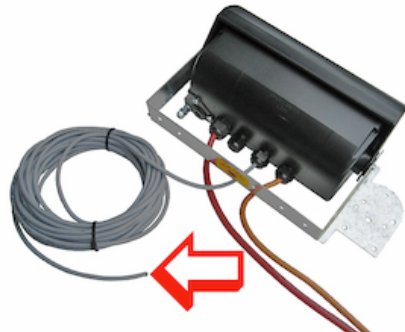


OAE405 - Battery box mounted on lift frame (suppl)





OAE500 - Wire connection ETMA(VEHH)



OAE501.12 - Cable ETMA(VEHH) -12m



OAE502 - Reed sensor on platform



OAE503.1 - Cabin switch (single use)



OAE503.2 - Cabin switch (double use)



OAF100.ST - Fixed 3-piece bumper STEEL mounted on lift frame



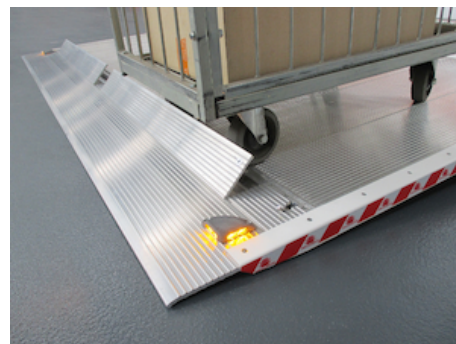
OAH013.60.LE - Hydr.stabilising leg straight 4T LE...mm



OAH010.LE - Hydraulic stabilising leg 10T



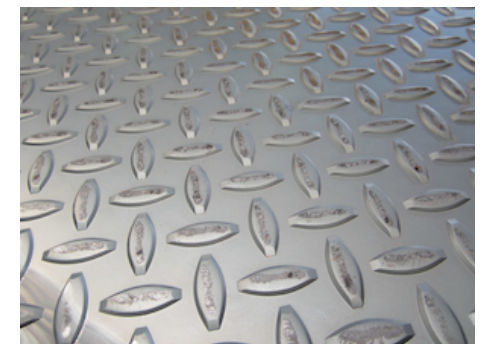
OAP100.M - Manual rollstops in platform point



OAP100.A - Automatic rollstops in platform point



OAP021 - 1 STD. side ramp (type A) for OAP020



OAP300 - Platform steel





OAP202.LR - 2 hinged side safety rails
L+R - STD



OAP302.S - Extension STEEL platform
per 10 cm



OAP303 - Platform width out of standard

T=
non-standard

OAP120.ST - Supplement roll stops in
steel platform



OAP302.D - Platform depth out of
standard (1-4 pcs)

T=
non-standard

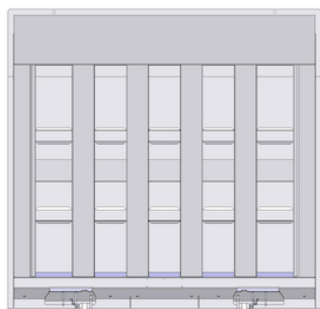
OAP303.B - Platform width DHL*
2551-2590 mm



OAP304 - Steel platform flat between
the main beams



OAP305 - Steel platform with fully flat
exterior side



OAP323 - Steel platform with vertical
beam structure



OAP420 - Without platformlock on client
request

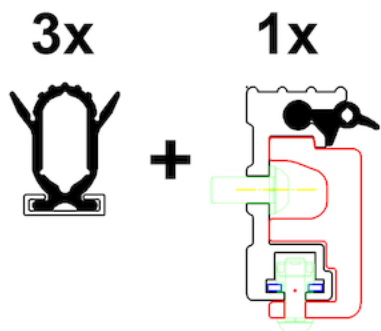


OAP422.L - Standard lock on STEEL
platform L

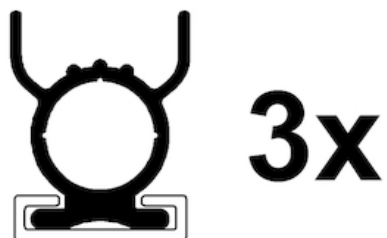


OAP422.R - Standard lock on STEEL
platform R





OAT001 - Rubber platform seals high - 4 sides



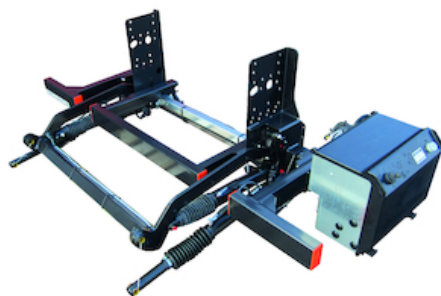
OAT003 - Rubber platform seals 25mm - 3 sides



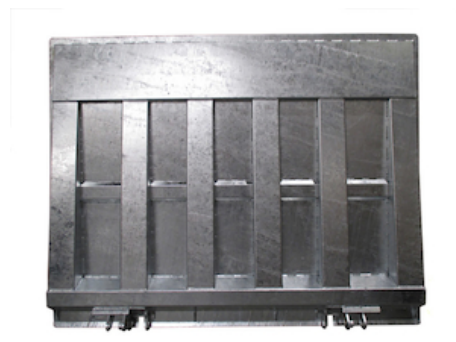
OAT020 - Platform flags TÜV type



OAT023 - Reflecting platform flags export



OAT102 - Standard finish in KTL + powder for HTL frame



OAT124 - GALVA finish for steel DHL* platform



OAT131 - Publicity plate for platform, supplied loose



OAT131.PM - Glued publicity plate on platform



OAU100 - Control box left (right steer wheel UK)



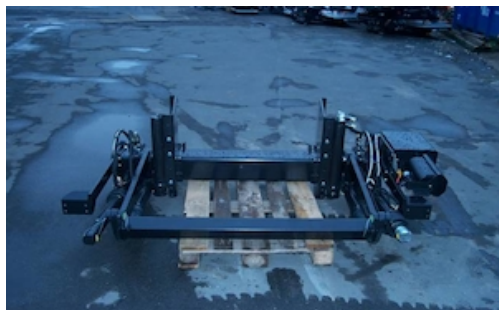
OAU007.A - Kit CAR TRANSPORT on alu platform



OAU007.S - Kit CAR TRANSPORT on steel platform



OAP301 - Platform alu



OAH014.02 - Premounting of stabilisers on mounting plates



OAP302.A - Extension platform ALU / DHESU per 10 cm



OAP350.H03 - Flat alu platform with ALU support beams >1500kg



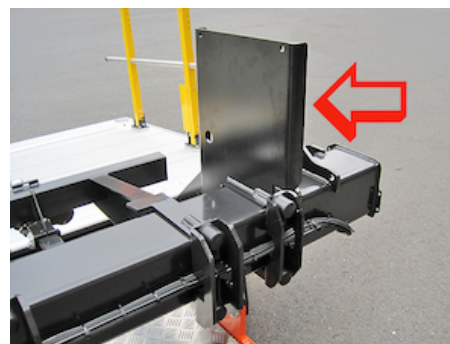
OAP421.L - Standard lock on ALU platform L



OAP421.R - Standard lock on ALU platform R



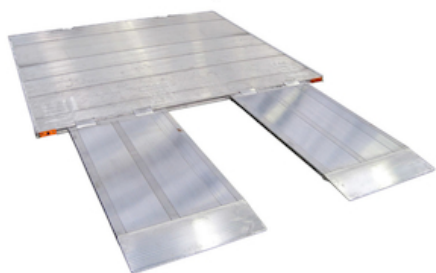
OAM010 - Mounting plate bolt-on



OAM010.B - Higher mounting plates



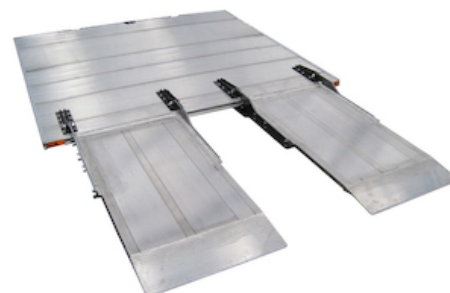
OAP403.1 - Foldable point (1x) on DHL*



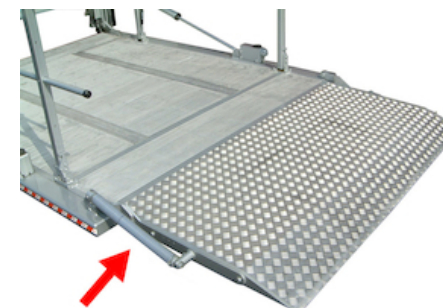
OAP403.2 - Foldable point (2x) on DHL*



OAP404.1 - Reinforced foldable point (1x) on DHL*



OAP404.2 - Reinforced foldable point (2x) on DHL*



OAP405 - Traction spring on foldable point

OAP405.LR - 2 traction springs L+R on foldable point

