

## Cantilever lift DH-LEZ.10 with foldable platform 1000 Kg



**DHOLLANDIA**





In closed position, the tail lift still offers free access to the loading space inside the body.



The foldable platform can be deployed into a full-width platform in a matter of seconds.

## Foldable platform offering free access to the cargo space

The DH-LEZ.10 is specially designed for **vertically folding platforms** [option OAP406] and offers **maximum flexibility** to the operator. When the platform stands in its travel position, one door remains free and the driver has free access to the cargo space inside the body. When large and heavy cargo must be handled, the platform can be opened into horizontal work position, and unfolded to a **full-width platform** in a matter of seconds.

Thanks to the wide arm center, the DH-LEZ.10 offers **superior platform stability**. It is suitable for light and medium-duty trucks up to 7.5T GVW, and available with standard bolt-on mounting plates, or quick-fit mounting plates adapted to most popular brands and types of van chassis.

### + Maximum flexibility:

- free access through the free door for small, light parcels / objects
- full-fledged tail lift for pallets / heavy objects or machinery

### + 2 hydraulic lift cylinders and a wide arm with guarantee maximum platform stability

### + Conical / wedge platform. Level ride with automatic tilt at ground level

### + Lift frame in Protection PLUS finish (zinc phosphate + KTL epoxy primer + polyester powder top coat)





Half-width platform, or foldable platform [option OAP406] made of lightweight aluminium profiles



2 hydraulic lift cylinders and a wide arm with guarantee maximum platform stability

#### PLATFORM

- Half-width platform, or foldable platform [option OAP406] made of lightweight aluminium profiles
- Synthetic rollers for the contact between the platform and the ground

#### FUNCTIONAL & MECHANICAL CHARACTERISTICS

- Wide lift arm for a integral support of the platform
- Conical / wedge platform. Level ride with automatic tilt at ground level
- Platform tilt adjustable at any position from the exterior controls

#### HYDRAULICAL CHARACTERISTICS

- 2 lift cylinders for maximum platform stability
- 1 tilt cylinder with spring assisted platform opening
- Electrical safety valves on all cylinders
- Manual emergency operation on all electrovalves
- Cylinder piston rods in hard-chromed stainless steel
- Cylinders equipped with rubber gaitors and lubrication
- Pump unit 12V or 24V DC, accessible on 5 sides for easy maintenance

#### ELECTRICAL CHARACTERISTICS

- Control box with battery disconnect switch, joystick control and change-over switch integrated in the cover of the pump unit [OAE030.BT.P.0]
- Without battery disconnect switch: dual toggle-switch control box supplied loose [OAE048.0]
- Electrical controls without sensitive electronic components in basic configuration
- Safe exterior controls with compulsory 2-hand operation
- Electric motor with thermal cut-out fuse

#### FITTING

- Bolt-on mounting plates for quick and easy fitting [OAM010]
- Also available with quick-fit mounting plates adapted to the vehicle brand, the wheelbase and overhang [option OAM014]
- Fixed 3-piece bumper bar available as option [OAF100.ST]

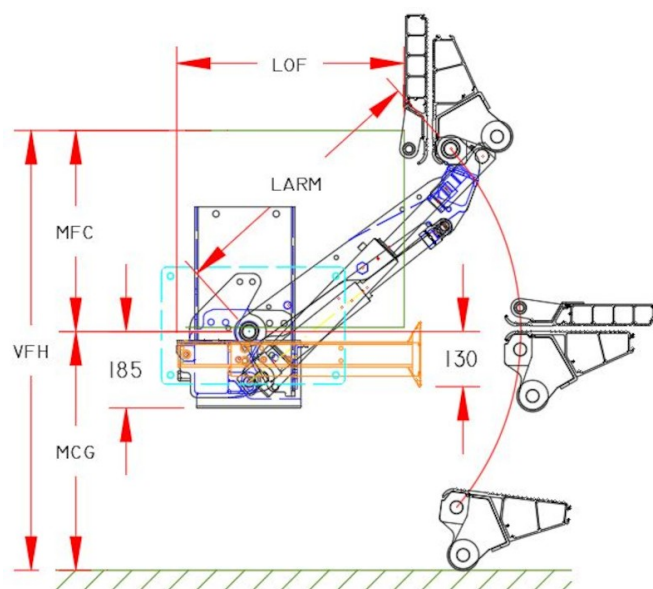
#### FINISH & MAINTENANCE

- Low-maintenance bearings in all articulation points, plus grease nipples
- Lift frame in hot-dip zinc plated or "galvanised" finish. Best possible protection against corrosion [OAT104].
- Alu platform or platform sections in natural finish

Disclaimer: data and images of lifts and options are indicative, and may vary in function of the lift execution and vehicle details. Ask confirmation from DHOLLANDIA.







#### TECHNICAL CHARACTERISTICS

**DH-LEZ.10**

<b>Lift frame</b>	120 x 120 mm
<b>Cylinders</b>	2 lift cylinders + 1 tilt cylinder + 1 memory cylinder
<b>Type of ride</b>	Wedged platform. Level ride + automatic tilt at ground level
<b>Material</b>	Light-weight aluminium
<b>Platform overlap under floor</b>	no data
<b>Standard platform depths</b>	1250 - 1450 - 1600 mm
<b>Standard platform widths</b>	Free up to 2300 mm in steps of 5 mm
<b>Lift arm lengths</b>	570 - 650 mm
<b>Lift arm widths</b>	1216 mm
<b>Standard control unit</b>	OAE030.BT.P.0
<b>Standard finish of the lift frame</b>	Protection PLUS [OAT102]

#### MOUNTING DIMENSIONS

**DH-LEZ.10**

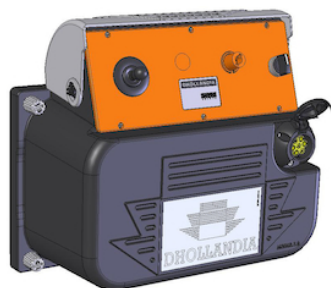
<b>larm</b>	<b>570</b>	<b>650</b>
<b>vfh max.</b>	1060	1180
<b>mfc max.</b>	510	580
<b>mfc min.</b>	250	300
<b>mfg max.</b>	550	600
<b>lof</b>	385	430
<b>lof</b>	595	680

Overhang measured with foldable platform OAP406. In case of half platform standing against the rear frame, approx. 60 mm extra overhang to be taken into account.





OAE001 - Kit 2-button wander lead + spiral cable



OAE030.BT.P.0 - OAE030.BT in cover of pump unit



OAE041.BP.P.0 - OAE041.BP in cover of pump unit



OAE030.BT.1 - Controls + battery switch + turn switch



OAE041.BP.1 - Arctic controls + E2012 + push button



OAM025 - Adjust. support for control behind power pack



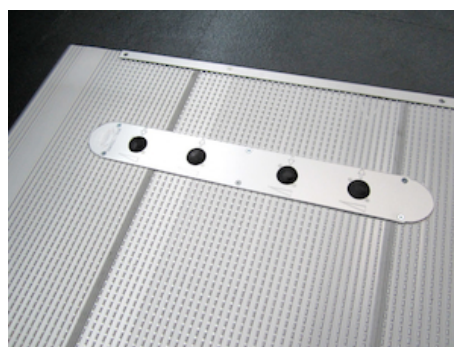
OAE031.Z.0 - Control box 3+1 buttons without battery isolator



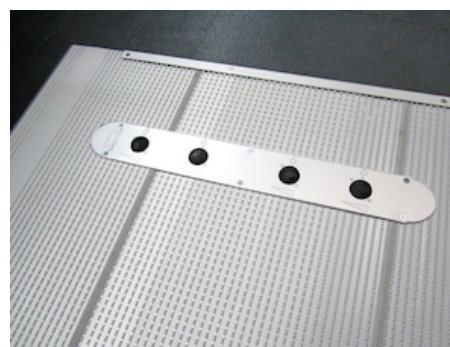
OAM026 - Fitting support control box 3+1 BTN type B



OAE048.0 - Control unit with 2 toggle-switches



OAE060 - 4-button foot controls on the platform



OAE064 - 4-button foot controls + reed sensor



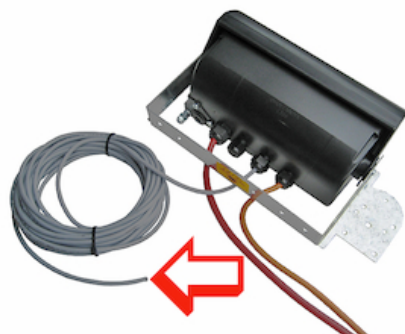
OAE200.B - Flashing platform lights 12/24V + protection







OAE500 - Wire connection ETMA(VEHH)



OAE501.12 - Cable ETMA(VEHH) -12m



OAE502 - Reed sensor on platform



OAE503.2 - Cabin switch (double use)



OAF100.ST - Fixed 3-piece bumper  
STEEL mounted on lift frame



OAF103 - Preparation LM bumper for  
ball coupling



OAM006 - Stop for lift arm against  
underside of body



OAM010 - Mounting plate bolt-on



OAM014 - Quick-fit mounting plates  
LM-LC-LSP



OAH012.B - 2 mechanical stabilising  
legs type B

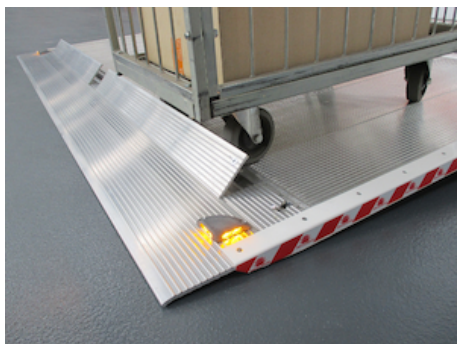


OAH013.40.300 - Hydr.stabilising leg  
straight 2T 300mm



OAP100.M - Manual rollstops in platform  
point





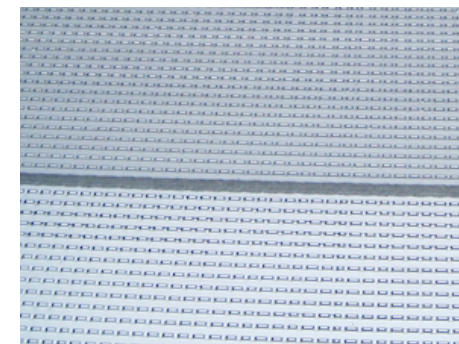
OAP100.A - Automatic rollstops in platform point



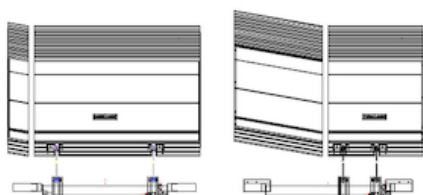
OAP301 - Platform alu



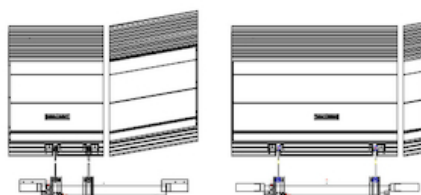
OAP302.A - Extension platform ALU / DHESU per 10 cm



OAP353.F - Full anti-slip milling on alu V-platform



OAP406.L - Vertically foldable platform left Alu



OAP406.R - Vertically foldable platform right Alu



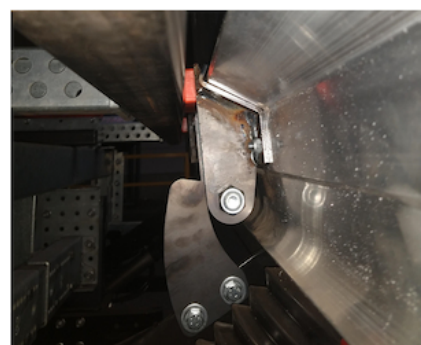
OAP420 - Without platformlock on client request



OAP421.L - Standard lock on ALU platform L



OAP421.R - Standard lock on ALU platform R



OAP435.B - Lock for foldable platform LEZ



OAT020 - Platform flags TÜV type



OAT023 - Reflecting platform flags export







OAT104 - Standard finish GALVANISED for HTL frame



OAT103.9004 - KTL + powdercoat RAL9004 instead of OAT104 (min.5)



OAT135.2000 - Anodisation alu platform < 2001 mm



OAU100 - Control box left (right steer wheel UK)

